

2003 *Facilities Master Plan*



Community College of Philadelphia



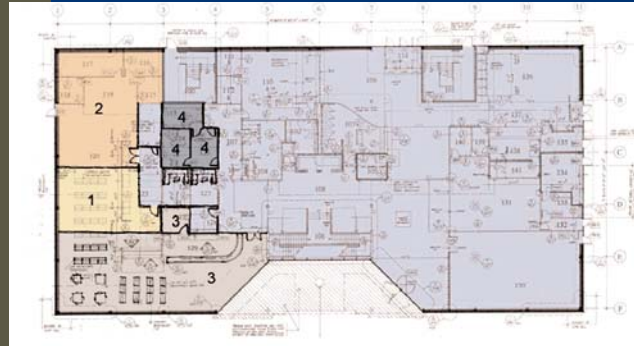
*1700 Spring Garden Street
Philadelphia, Pennsylvania*

H2L2_{LLP}

November 15, 2003

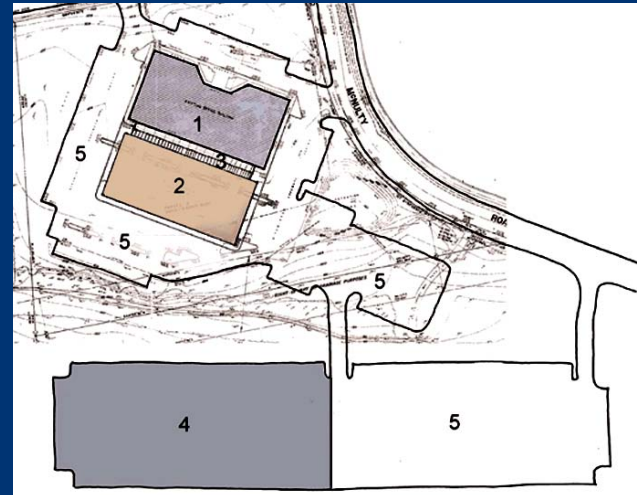
1

NORTHEAST REGIONAL CENTER



Short-Term Project - Improve Library and Academic Services

- 1. Computer Lab
- 2. Learning Center
- 3. Library
- 4. Councilors' Offices



Long-Term Project - Increase Capacity at Northeast Center
Build second building at Northeast Center, linked to first building with glass student services atrium

- 1. Existing 60,000 sq.ft. building
- 2. New 60,000 sq.ft. building
- 3. New glass atrium
- 4. New parking
- 5. Existing parking

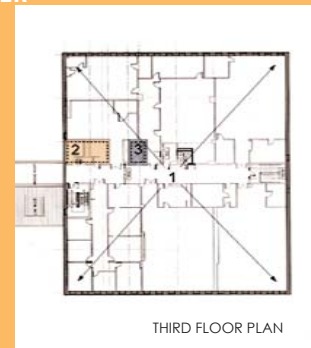
2

NORTHWEST REGIONAL CENTER



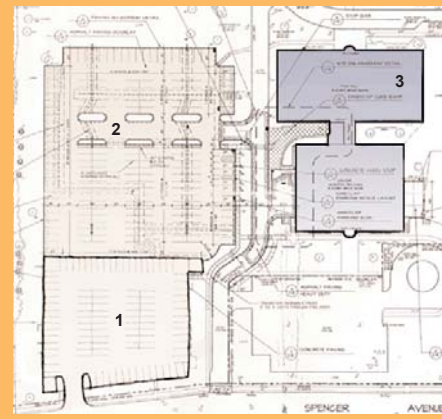
Renovate lab space on second floor of 'B' building for another programmatic use

- 1. Special Program Labs
- 2. Support Spaces



Complete build-out of third floor of 'B' building with:

- 1. Science labs & support spaces
- 2. Restrooms
- 3. Elevator



Increase parking at Northwest Center

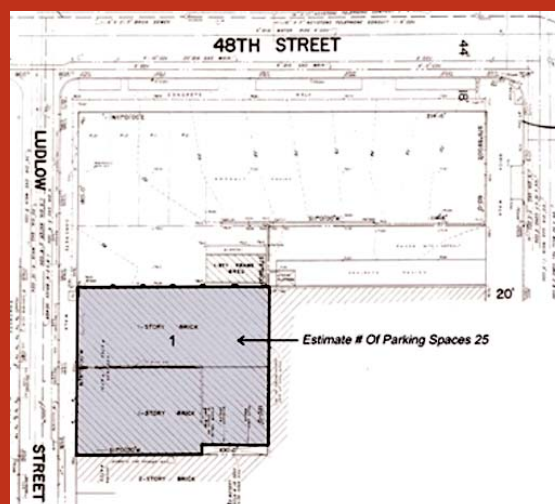
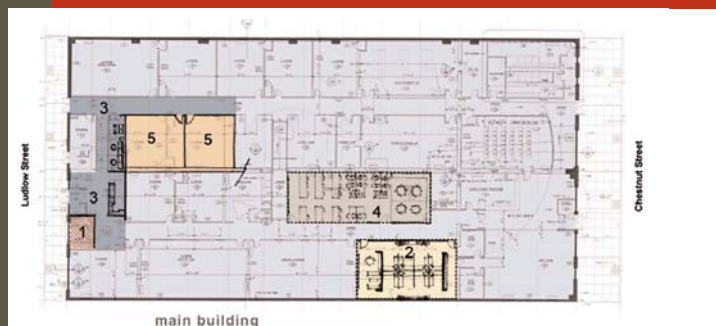
- 1. New Parking
- 2. Existing Parking
- 3. Classroom Building

3

WEST REGIONAL CENTER

Redesign current classroom building to accommodate current academic and student support services, improve security, provide better meeting space and update interior.

- 1. Book outlet
- 2. Faculty offices
- 3. Entry reconfiguration
- 4. Learning resources
- 5. Reconfigured Classrooms



Relocate the AutoTech Center to a new 30,000 square foot, one story building (location to be determined).

Demolish the current AutoTech Center for additional parking.

**COMMUNITY COLLEGE OF PHILADELPHIA
2003 FACILITIES MASTER PLAN**

EXECUTIVE SUMMARY

The 2003 Facility Master Plan is a revision and update of the 1997 Master Plan. The plan has three essential themes:

Addressing specific program requirements that cannot be fully addressed in current space allocations and/or conditions.

Through the 2001-03 master planning process, a range of programs and services were identified where the currently used space no longer is adequate to address optimally current student and staff needs. Issues to be addressed include: the need to have more space for some functions, establishing new adjacencies that facilitate the delivery of complementary programs and services, the redesign of space to accommodate current delivery strategies, and the requirement to refurbish older spaces that have deteriorated through long-term usage.

Enhancing the over all attractiveness and functionality of the College's main (Center City) campus

The 2003 Master Plan continues and expands upon the ideas contained within the 1997 Master Plan to create a more attractive and campus-like environment at the College's main (Center City) location. The Master Plan goals seek to:

- Establish additional ways for the campus to be more distinctly differentiated from its surrounding community, e.g. through new building design, fencing, exterior lighting, signage and landscaping.
- Unify the campus architecturally and soften the heavy angularity built into the original 1983 construction through redesign of facades and the design of new buildings.
- Continue to improve flow of students and staff through the College's Spring Garden Street campus addressing such issues as safety, the over dependence on escalators and the poor connectivity between the Bonnell and Mint Buildings.
- Balance the distribution of students and staff so that activity occurs equally on both sides of 17th Street through new construction and redesign of interior space.
- Further reduce the impact of having a major city street (17th Street) running through the center of campus.
- Continue efforts begun with the development of CBI to create visual and physical relationships in campus architecture with Center City.
- Redesign space whose location or current design fails to fully meet regulatory requirements (e.g. ADA or City Fire Code).

Continuing the development of the College's three Regional Centers.

The 2003 Master Plan direction for the three Regional Centers is to make each of them more complete with respect to the programs and services which can be offered and to address the growing shortage of resources, (e.g. offices, classrooms, parking) which has been caused by the rapid enrollment growth at the centers. Prior master planning for the Northeast and West Regional Centers anticipated their eventual expansion within the boundaries of property already owned by the College. However successful expansion of the West Center will require collaboration with community partners to find additional space in adjacent properties.



Community College of Philadelphia

H2L2



NEW DINING / HRM FACILITY (PROJECT 4)

4 NEW DINING / HRM BUILDING & ADDITION TO STUDENT LIFE / GYMNASIUM COMPLEX
 Replace obsolete Dining and HRM facilities with new building, add classrooms and student space addition to Winnet, upgrade and enhance Student Life space in Winnet Building, upgrade campus-cooling system.

5 STUDENT SYSTEMS REDESIGN
 Relocate Student Systems to the existing dining and kitchen space in Bonnell. Upgrade the Ground floor of the Mint Building as new Business Services Center.

6 REDESIGN THE NORTHERN SECTION OF THE FIRST AND THIRD FLOORS OF THE MINT BUILDING
 Relocate administrative offices to the Mint third floor; renovate the first floor of the Mint into classrooms and support facilities.

7 CONSOLIDATE THE LEARNING LABS ON THE FIRST FLOOR OF BONNELL
 Construct larger, consolidated Learning Lab on first floor of Bonnell.

8 PEDESTRIAN BRIDGE TO LINK CBI BUILDING TO CAMPUS, IMPROVE 17TH STREET PEDESTRIAN CROSSING
 Connect CBI building to campus with enclosed pedestrian bridge, linked to second floor of new Winnet Building classroom addition. Improve safety and appearance of 17th St. pedestrian crossing.

9 RECREATION DECK
 Cover existing Recreation Deck with all-weather enclosure to allow year-round use.

10 PARKING GARAGE REHABILITATION
 Perform short and long-term parking garage maintenance per study performed by Walker Parking Consultants.

11 IMPROVE APPEARANCE OF MAIN CAMPUS, IMPROVE ACCESS TO UPPER LEVELS OF BONNELL BUILDING
 Improve vertical circulation in Bonnell Building by constructing a new stair/ elevator tower. Make continued improvements to exterior campus environment, including new trees, signage, benches and street furniture.

12 IMPROVE VERTICAL CIRCULATION IN WEST BUILDING. UPGRADE BOOKSTORE
 Remove escalators, replace with elevators and monumental stair. Improve access to and visibility of the bookstore.

13 1809 SPRING GARDEN STREET DEMOLITION AND REBUILD
 Develop program for new facility to replace 1809 Spring Garden Street building.



14 MECHANICAL SYSTEMS RENEWAL
 Short and long-term maintenance plan for Mechanical Systems on all campuses; study performed by McHugh Engineering.

15 EXPANSION OF LIBRARY INTO WELCOME CENTER
 Expand and upgrade Main Campus Library.

16 DESIGN TECHNOLOGIES PROGRAM
 Relocate Design Technologies Program to the second floor of the West Building.

17 UPDATE CHEMISTRY AND BIOLOGY LABS
 Renovation and upgrade to Chemistry and Biology labs for current technology.

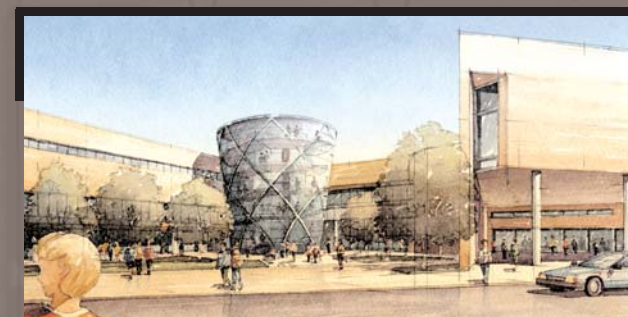
18 ESTABLISH INSTRUCTIONAL DEVELOPMENT TECHNOLOGY CENTER
 Establish a comprehensive Instructional Development Technology Center for Academic Computing, Teaching Center, Curriculum Development, and Distance Learning.

19 ASSESSMENT CENTER
 Redesign and expand Assessment Center.

20 REDESIGN TELEVISION STUDIO SPACE
 Define how the Television Studio space will be used in the future.

21 CENTER FOR DISABILITY
 Relocate and expand Center for Disability in the context of current service levels and profiles of students served.

22 UPDATE ALLIED HEALTH LABS
 Update Allied Health Labs and re-configure space to increase efficiency.



NEW BONNELL STAIR / ELEVATOR TOWER (PROJECT 11)

23 GRADUAL CONVERSION OF GENERAL - PURPOSE TO SMART CLASSROOMS
 Develop year-by-year plan for PC classroom expansion or contraction based upon program needs; retrofit current standard classrooms to smart classrooms.

24 REDESIGN PHOTOGRAPHY PROGRAM SPACE
 Redesign Photography program space to respond to changing technologies and current programmatic directions.

25 COUNSELING CENTER REDESIGN / NEW LOCATION
 Redesign the Counseling Center spaces to meet the needs of both student systems and student life functions.

26 STUDENT HEALTH SERVICES
 Redesign of Student Health Services to address space needs of current services, and level of student/ staff usage.

27 GYM UPDATE TO REFLECT CURRENT NEEDS
 Examine the future of the Recreation Deck, improvements to current gym support spaces, and expansion of Aerobics/ Dance/ Weight Room spaces.

28 IMPROVE DESIGN AND FUNCTIONALITY OF WINNET GREAT HALL
 Redesign the Great Hall spaces to meet current meeting and special event standards.

29 REDESIGN AND EXPAND EARLY CHILDHOOD EDUCATION CENTER
 Redesign of ECE Program space to address current and future enrollment levels and current instructional needs.

30 RELOCATE CURRENT LANGUAGE LAB FROM MINT ROTUNDA LOCATION TO ADEQUATELY SIZED, APPROPRIATELY OUTFITTED LOCATION
 Development of an appropriately designed language lab to support: ESL, Foreign Language, Music Listening and ASL.

31 REDESIGN OF BONNELL-ONE SPACE ADJACENT TO SMALL AUDITORIUM TO ACCOMMODATE THE THEATER AND MUSIC PROGRAMS
 Develop appropriate performance space for the College's Theatre Program, Music Programs and other similar performance-based activities.

32 INCREASE AND IMPROVE QUALITY OF FACULTY OFFICE SPACE ON ALL CAMPUSES

Community College of Philadelphia 2003 Master Plan

November 15, 2003

Table of Contents

Introduction	Page 1
Part I – Progress on the 1997 Master Plan	Page 5
Part II – 2003 Facility Master Planning Assumptions	Page 9
Part III – 2003 Master Plan Space Goals	Page 16
Part IV – 2003 Facility Master Plan Proposal Projects	Page 22
Part V – Description of Facility Master Plan Projects Including Cost Estimates	Page 25
1. Northeast Regional Center Expansion including expanding the Center and reworking the library and student support space	Page 25
2. Northwest Regional Center Expansion including completing the South Building, developing parking (including expanding lot (tear down Paley) and two-level deck), and future expansion options	Page 30
3. West Philadelphia Regional Center Expansion including redesigning Main building and expanding Auto Tech Facility to permit affiliated programs with one or more major auto manufacturers. (Will require additional property acquisition or lease.)	Page 38
4. Expand Student Life/Gymnasium Complex with New Building(s) to Accommodate Expanded Student Services, Relocation of Bonnell Food Services and Dining Areas; Hotel/Restaurant and Dietetics Programs; and Additional General-Purpose Classrooms. This will include a New Independent Cooling System.	Page 45
5. Relocate and Expand Student Systems to Ground Bonnell and Mint – includes Mint Ground Business Service Center and upgrades to reflect building code compliance.	Page 55
6. Redesign Northern (Front) Section of First and Third Floors of Mint Building	Page 61
7. Learning Lab Consolidation	Page 64

Description of Facility Master Plan Projects (continued)

8. External Bridge Which Links New Center for Business and Industry with New Construction Adjacent to the Winnet and Gymnasium Buildings, and Development of Options for a Safe Pedestrian Crossing of 17 th Street.	Page 67
9. Recreation Deck (Renewal and Enclosure)	Page 70
10. Parking Garage Rehabilitation	Page 73
11. Improve Appearance of Campus Including Grounds and Entryways. Improve Access to Upper Levels of Campus Buildings, Particularly in the Bonnell and Mint Buildings.	Page 74
12. Improve Access to Upper and Lower Levels of the West Building	Page 81
13. 1809 Spring Garden Street – Demolition and Rebuild	Page 83
14. Mechanical Systems Renewal	Page 86
15. Expand Central Library into Welcome Center. Redesign the First Floor Bonnell Library Space to Better Meet Current Program Requirements.	Page 89
16. Design Technology Program (Relocation and Redesign)	Page 93
17. Update Chemistry and Biology Laboratories including integration of Computer Technologies	Page 95
18. Establish Instructional Development Technology Center	Page 97
19. Assessment Center (Redesign and Expand)	Page 99
20. Redesign Television Studio Space	Page 101
21. Center for Disability (Relocation and Expansion of Space)	Page 103
22. Update (and Consolidate, if Feasible) Allied Health Labs	Page 105
23. Gradual Conversion of General-Purpose Classrooms to Smart Classrooms and Additional PC/Laptop Classrooms as Needed	Page 109
24. Redesign Photography Program Space	Page 112
25. Counseling Center Redesign (New Location)	Page 115
26. Student Health Services. (Relocate and Expand)	Page 116
27. Gym Update to Reflect Current Needs	Page 118
28. Improve Design and Functionality of the Winnet Great Hall	Page 120
29. Redesign and Expand Early Childhood Education Classrooms	Page 121

- | | |
|--|----------|
| 30. Relocate current language lab from Mint Rotunda location to adequately-sized, appropriately outfitted location | Page 123 |
| 31. Redesign of Bonnell-One Space Adjacent to Small Auditorium to Accommodate Theater Program's Teaching and Performance Space, as well as to Increase Performance Space and Meet Other Needs of the Music Program | Page 125 |
| 32. Increase and Improve Quality of Faculty Office Spaces on all Campuses. | Page 128 |

Appendix A – Detailed Cost Estimates from Turner Construction