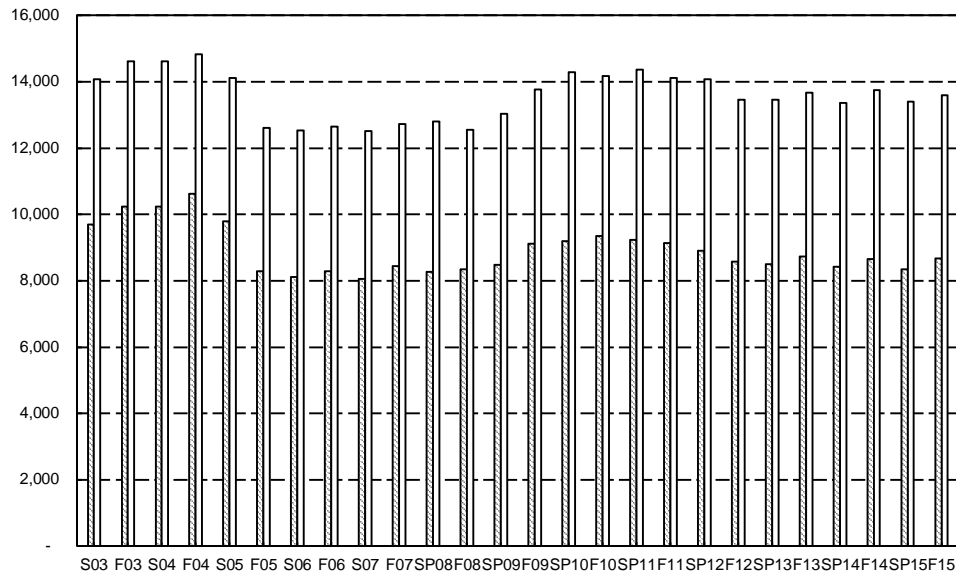


**TABLE A-5
ENROLLMENT TRENDS**

**FTE AND HEADCOUNT ENROLLMENTS - MAIN CAMPUS
FALL AND SPRING TERMS**



Year	FTE Enrollments		Headcount Enrollments	
	Fall	Spring	Fall	Spring
1988-89	7,029	6,873	10,424	10,243
1989-90	7,352	7,216	10,846	10,741
1990-91	7,634	7,465	11,307	11,084
1991-92	8,343	8,540	12,360	12,774
1992-93	9,790	9,655	14,448	14,560
1993-94	10,143	9,829	15,160	14,835
1994-95	9,759	9,167	14,706	13,948
1995-96	9,270	8,914	13,917	13,408
1996-97	8,932	8,390	13,377	12,699
1997-98	8,773	8,402	13,116	12,858
1998-99	8,959	8,373	13,366	12,760
1999-00	8,517	7,899	12,594	12,062
2000-01	8,654	8,214	12,841	12,528
2001-02	9,128	8,895	13,812	13,639
2002-03	9,776	9,690	14,034	14,078
2003-04	10,236	10,227	14,609	14,623
2004-05	10,631	9,796	14,819	14,122
2005-06	8,290	8,108	12,619	12,538
2006-07	8,294	8,055	12,647	12,508
2007-08	8,444	8,274	12,716	12,806
2008-09	8,349	8,487	12,548	13,043
2009-10	9,111	9,200	13,760	14,286
2010-11	9,340	9,228	14,180	14,360
2011-12	9,136	8,915	14,114	14,083
2012-13	8,572	8,492	13,451	13,454
2013-14	8,739	8,432	13,673	13,364
2014-15	8,664	8,338	13,756	13,394
2015-16	8,671		13,597	

Source: Final Harrisburg Report