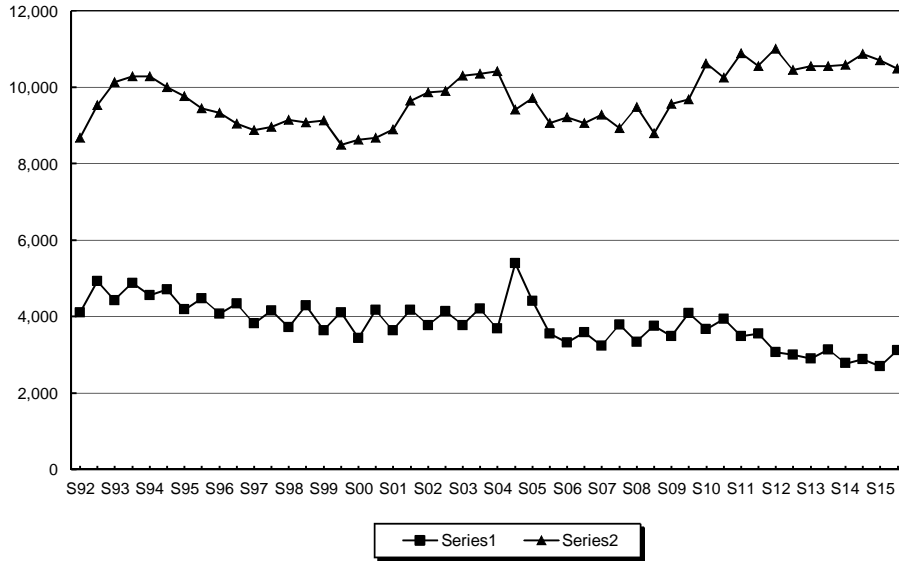


**TABLE A-16  
ENROLLMENT TRENDS**

**FULL-TIME AND PART-TIME STUDENTS  
ENROLLED AT MAIN CAMPUS  
FALL AND SPRING TERMS**



Year	Fall		Spring	
	Full-time	Part-time	Full-time	Part-time
1986-87	4,176	6,415	3,813	6,161
1987-88	3,987	6,407	3,602	6,385
1988-89	3,879	6,545	3,606	6,637
1989-90	3,902	6,944	3,737	7,004
1990-91	3,962	7,344	3,746	7,338
1991-92	4,278	8,082	4,103	8,671
1992-93	4,920	9,528	4,426	10,134
1993-94	4,882	10,278	4,551	10,284
1994-95	4,711	9,995	4,180	9,768
1995-96	4,467	9,450	4,078	9,330
1996-97	4,339	9,038	3,825	8,874
1997-98	4,151	8,965	3,719	9,139
1998-99	4,284	9,082	3,643	9,117
1999-00	4,099	8,495	3,431	8,631
2000-01	4,165	8,676	3,635	8,893
2001-02	4,168	9,644	3,770	9,869
2002-03	4,133	9,898	3,770	10,305
2003-04	4,207	10,357	3,691	10,417
2004-05	5,398	9,421	4,413	9,709
2005-06	3,556	9,063	3,320	9,218
2006-07	3,589	9,058	3,237	9,271
2007-08	3,791	8,925	3,327	9,479
2008-09	3,759	8,789	3,486	9,557
2009-10	4,081	9,679	3,667	10,619
2010-11	3,938	10,242	3,480	10,880
2011-12	3,556	10,558	3,073	11,010
2012-13	3,002	10,449	2,900	10,554
2013-14	3,128	10,545	2,774	10,590
2014-15	2,882	10,874	2,693	10,701
2015-16	3,114	10,483		

Source: Final Harrisburg Report