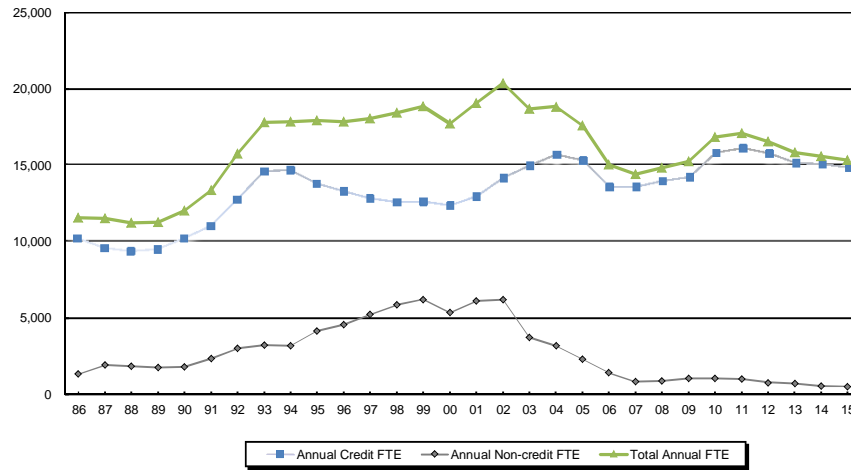


**TABLE A-1**  
**ENROLLMENT TRENDS**

**ANNUAL STUDENT FTE ENROLLMENT**



Year	Annual Credit FTE <sup>(1)</sup>	Annual Non-credit FTE <sup>(1)</sup>	Total Annual FTE
1970-71			6,081
1971-72			5,203
1972-73			5,260
1973-74			7,058
1974-75			8,699
1975-76			9,521
1976-77			10,002
1977-78	10,219	414	10,633
1978-79	9,692	359	10,050
1979-80	9,942	356	10,298
1980-81	9,515	294	9,809
1981-82	9,776	660	10,436
1982-83	10,236	615	10,851
1983-84	10,723	828	11,550
1984-85	10,358	986	11,343
1985-86	10,241	1,329	11,570
1986-87	9,583	1,939	11,522
1987-88	9,385	1,849	11,234
1988-89	9,524	1,757	11,281
1989-90	10,223	1,814	12,036
1990-91	11,007	2,349	13,356
1991-92	12,733	3,017	15,750
1992-93	14,576	3,227	17,803
1993-94	14,649	3,197	17,846
1994-95	13,769	4,156	17,925
1995-96	13,271	4,586	17,857
1996-97	12,822	5,221	18,043
1997-98	12,572	5,854	18,426
1998-99	12,627	6,213	18,840
1999-00	12,355	5,376	17,731
2000-01	12,957	6,104	19,061
2001-02	14,177	6,198	20,375
2002-03	14,968	3,729	18,697
2003-04	15,657	3,181	18,838
2004-05	15,291	2,324	17,615
2005-06	13,591	1,437	15,028
2006-07	13,570	833	14,403
2007-08	13,942	899	14,841
2008-09	14,208	1,039	15,247
2009-10	15,809	1,032	16,841
2010-11	16,090	1,007	17,097
2011-12	15,768	775	16,543
2012-13	15,116	711	15,827
2013-14	15,050	553	15,603
2014-15	14,851	508	15,359

NOTE: FTEs prior to 1976-77 include only FTEs fully funded by the State.

<sup>(1)</sup> Credit and Non-Credit breakdown was not available for data prior to 1977-78.