

## Information regarding SPSS statistical software

**ATTENTION CURRENT USERS:** The SPSS license key number must be changed every year. You do NOT need to re-install your software but you do need to enter the current key code when prompted that your license has expired.

For 2015 this new key code is **797cc2aafd8144ac8905**

The College provides access to SPSS version 21 as a complement to your course. In order to download and install it onto your personal computer, please follow these directions. The file that needs to be downloaded is quite large (almost 1 GB) and will take some time to transfer to your computer. If you do not have broadband access to the Internet, we do not recommend downloading this file. Instead, you may wish to visit the Student Academic Computer Center (SACC) located on Main campus in the Bonnell building (B2-33) where this software is currently installed.

1. To download the file, enter the following address into your web browser or click on this link

<http://faculty.ccp.edu/dept/spss/locked/>

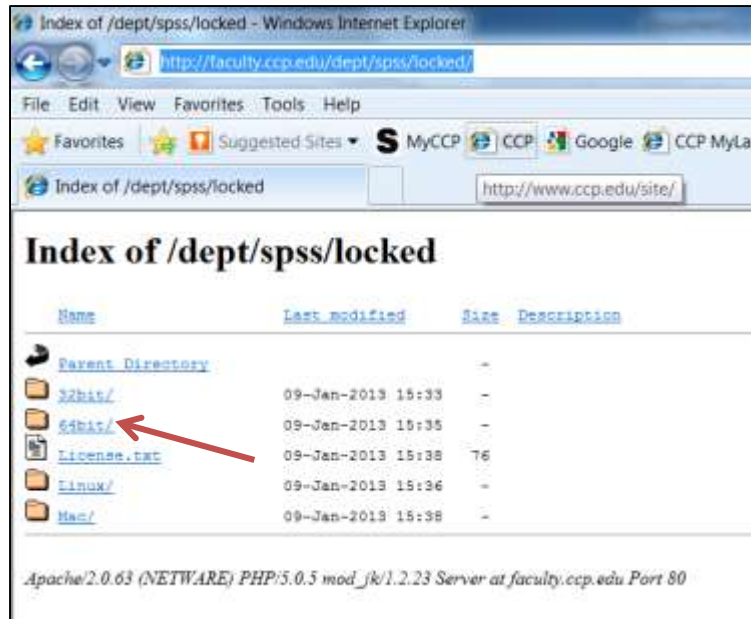
2. You will see the following window asking for a valid username and password.



Enter the username: ad\spss

Enter the password: spss2013

3. You will be taken to the download location for the software:



You need to click on the appropriate version of the software based on the operating system of your personal computer:

**32bit** for Windows XP. (Use this also if your system is the 32bit version of Vista or Windows 7)

**64bit** for Windows 7 (the 64bit version)

**Mac** for Apple OS

**Linux** for Linux OS

4. Once you select the appropriate version, you will see the download link for your software:

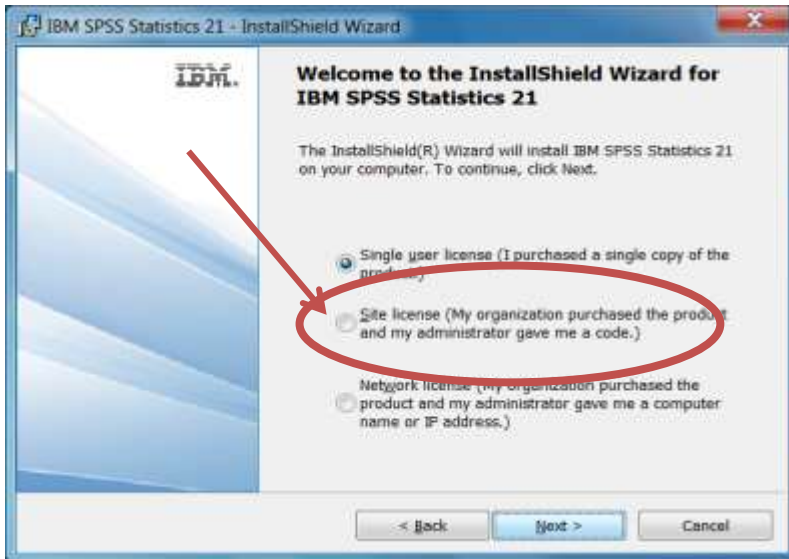


Click on this link and select the Save option from the dialog box.



5. Once your software is finished downloading, you can disconnect from the Internet.
6. Right-click on the SPSS\_Statistics\_21\_ icon and select "Run as Administrator" to start the installation of the software. You need to have administrative rights on your computer to install this software. If your operating system does not require this, you would just double-click the icon to initiate the installation.
7. The software will begin the installation process and you will need to click on NEXT, etc. to move through the process.

8. IMPORTANT: You will next see a dialog box asking for license information. Please select the option for Site License before clicking NEXT.



9. Click the option to Accept the license terms, and click through the next few screens. The default language of ENGLISH has already been selected and you do not need to install any other languages, unless necessary. Also, you do not need to install the JAWS for Windows screen reading software unless necessary. Continue to click NEXT to begin the installation.
10. Once the software has finished installing, you need to authorize the license. Click OK to begin this process.



11. Select to license the product now and then enter the following code into the Enter code box. This code is case sensitive and should be typed carefully into the box.
- 797cc2aafd8144ac8905**
12. Once your license code has successfully been registered, you will be taken to an IBM web page. Please fill out the appropriate information to complete the registration.